



# The WORKS

## Celebration Edition

WISDOM OPTIMISM RESILIENCE KINDNESS SERVICE



### MINSTER HUB

The Minster Hub offers weekday provision for vulnerable children and those of key workers. It is available to children from across the family of schools in and around Southwell. Visit the hub website at <http://www.minster.notts.sch.uk/minsterhub> for more details and to make a booking. Over the Easter holiday (including bank holidays) the onsite provision continues operating.

### A PRAYER FOR THIS NEW TERM

May your life draw us forward O God,  
May we know the strength of your unbreakable love.  
In our learning, and our questioning.  
In our sadness and our laughter.  
In our caring and in our serving,  
May we know you are with us.  
Fill us with optimism.  
Amen.

### SUCCEEDING TOGETHER

This issue is to celebrate all the incredible home learning that is being completed across all year groups by our students. Work has been arriving to proud teachers in all shapes and forms and whilst we cannot showcase it all, we can however pause and say a heartfelt thank you to you our students and families, who have shown resilience and optimism as we change the way we learn as a community.

## News

### THANK YOU TO YEAR 10 FOR YOUR KINDNESS AND SERVICE TO THE WIDER COMMUNITY

Just before we closed year 10 students took part in the Tenner Challenge raising money to donate to their nominated charity Southwell Live at Home, who support older people to live independently. This week we received an email of thanks to share.

*Thank you so much for your generous donation of £625.00 towards MHA, we are truly grateful for every single donation. This will be a wonderful resource to help us to support and improve the quality of life for people across the UK, enabling them to live later life well.*

*Now more than ever as we are facing this national crisis, it's amazing to see people come together and support one another despite all the difficulties that may be faced during these unprecedented times. I want to personally say a massive thank you for reaching out to us as a charity, and supporting our residents, your donation will go a long way and make such a difference.*



## THE CHAMBER CHOIR COME TOGETHER FOR THEIR FIRST VIRTUAL PERFORMANCE.

Congratulations on what can only be described as a beautiful performance of Christus Factus Est which is the first of a series of performances that will be shared via our YouTube channel.

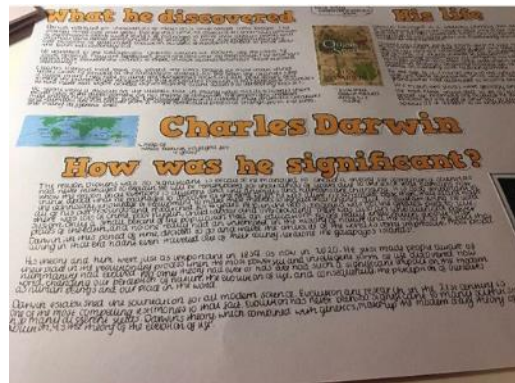
The link to our Minster School channel can be found here

[https://www.youtube.com/channel/UC93x\\_ggRfLiZ3j14QU1K3jg](https://www.youtube.com/channel/UC93x_ggRfLiZ3j14QU1K3jg)

## Learning Gallery

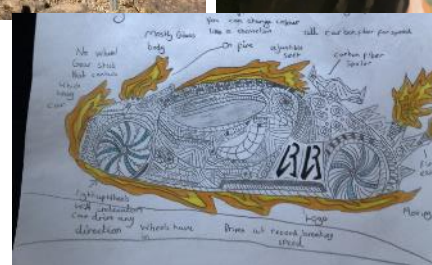
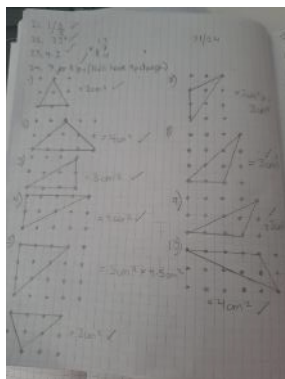
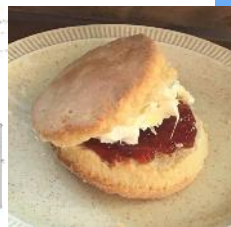
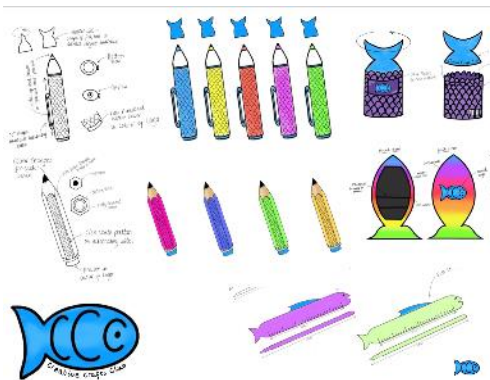
### WE WOULD LOVE YOU TO SHARE....

Any hopeful stories and examples of great activity at home: Learning; Well-being and Community spirit. Please only share if you are happy for us to celebrate with the wider school community through this newsletter and Twitter (only first names will be used) – send to [HomeActivities@minster.notts.sch.uk](mailto:HomeActivities@minster.notts.sch.uk)



What he discovered	How he was significant?
<p>Charles Darwin was a naturalist, geologist and biologist. He is best known for his contributions to evolutionary biology.</p> <p>His theory of evolution, which states that all species of life have evolved over time through a process of natural selection, is one of the most influential scientific theories ever.</p> <p>He also developed the theory of pangenesis, which proposed that all organisms have small particles called gemmules that contain information about their characteristics.</p>	<p>Charles Darwin was a naturalist, geologist and biologist. He is best known for his contributions to evolutionary biology.</p> <p>His theory of evolution, which states that all species of life have evolved over time through a process of natural selection, is one of the most influential scientific theories ever.</p> <p>He also developed the theory of pangenesis, which proposed that all organisms have small particles called gemmules that contain information about their characteristics.</p>

What he discovered	How he was significant?
<p>Charles Darwin was a naturalist, geologist and biologist. He is best known for his contributions to evolutionary biology.</p> <p>His theory of evolution, which states that all species of life have evolved over time through a process of natural selection, is one of the most influential scientific theories ever.</p> <p>He also developed the theory of pangenesis, which proposed that all organisms have small particles called gemmules that contain information about their characteristics.</p>	<p>Charles Darwin was a naturalist, geologist and biologist. He is best known for his contributions to evolutionary biology.</p> <p>His theory of evolution, which states that all species of life have evolved over time through a process of natural selection, is one of the most influential scientific theories ever.</p> <p>He also developed the theory of pangenesis, which proposed that all organisms have small particles called gemmules that contain information about their characteristics.</p>





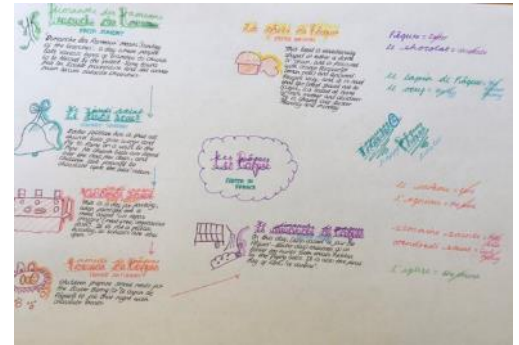
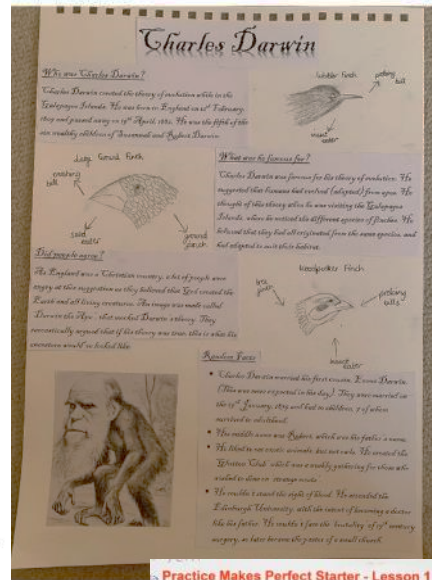
# Learning Gallery



## My Jaguar Keyring Model



- Key Features:**
- Fabric and velvet.
  - Buttons, make jaguar sounds when pressed. Fabric pointed claws which are bendy.
  - It promotes science by showing the features of a jaguars feet including pads. It engages children because it helps them know a little bit about this animal.



**Practice Makes Perfect Starter - Lesson 1 Week beginning April 20<sup>th</sup> 2020**

1) write five pounds and four pence in figures. £5.04	2) $40 + (9 - 1)$ 5	3) solve $k + k = 11$ $k = 5.5$ Cylinder	4) name of this solid? Cylinder	5) simplify $a \times b \times 7$ $Ab \times 7$	6) $\frac{3}{10}$ as a % 30%
7) order of rotational symmetry? 8	8) change 3.5cm to millimetres 35mm	9) faces? name? Triangle	10) simplify $a^2 + a^2 + a^2$ $3a^2$	11) names? angle w? 110°	12) names? Diameter
13) what metric unit would you use to measure the mass of a coin? grams/g	14) volume = $40\text{cm}^3$ length = ? 5	15) write in order of size 70%, 0.72 $\frac{7}{10}$	16) write 60% as a fraction in simplest form $\frac{3}{5}$	17) name of this triangle? Isosceles Triangle	18) how many degrees in $\frac{1}{2}$ of whole turn? 260°
19) angle a = ? 50	20) scale factor? length = 0.5 width = 1	21) solve $7b = 56$ $7 \times 8$ $8 = b$	22) $P = 2L + 2W$ find P if L = 3 and W = 4.5 $15 = 6 + 9$ $P = 15$	23) round 3499 to 1 significant figure 3500	24) what solid is this the net of? Triangular Prism

