



WISDOM OPTIMISM RESILIENCE KINDNESS SERVICE



MINSTER HUB

The Minster Hub offers weekday provision for vulnerable children and those of key workers. It is available to children from across the family of schools in and around Southwell. Visit the hub website at <http://www.minster.notts.sch.uk/minsterhub> for more details and to make a booking.

Key Updates

STAYING SAFE AND KEEPING IN TOUCH

As school closures look set to continue for a number of weeks, please remember The Minster School is still here to help you. Whether you need advice about learning, you have concerns about the well-being of someone in your household, you need help solving an issue or you are in need of spiritual guidance, please make contact.

Visit the Minster Hub website <https://www.minster.notts.sch.uk/minsterhub> for lots more information. The phone lines are open every weekday from 8am until 5pm – **01636 814000**

LOOKING TO THE FUTURE AND CONTINUED LEARNING

Despite the current circumstances The Minster School is already planning for students returning and how we will support them and you on their return. In the meantime, we all thank you at home for your continued support and for your resilience working with students to continue their engagement with learning. It is appreciated how difficult this can be, especially as time goes on; however, the return from the Easter holiday period is a good time to re-establish routines so that some learning activity happens every day. This will help us and your children in weeks and months to come.

ofqual QUALIFICATIONS AND GRADES

Ofqual have now released guidance to schools on how grades will be awarded this Summer. For each of our year 11 and 13 students, we have been asked to grade and then rank the students in every qualification they would have sat this year. We have also been asked to do the same for any qualifications year 12 students would finish this Summer, such as EPQ and Core Maths.

Heads of Department will be working hard with their teams over the coming half term to make sure the grades and rankings they decide are accurate, objective and consistent. This includes taking into account all of the experience of past years as well as knowledge of this year's students. The data we send to the exam boards cannot be shared, however rest assured we will complete this process with care and thought, to do the very best we can for all our students.

TEACHING AND LEARNING

From Monday 20th April we are moving to a slightly different model of home learning for some year groups. Year 10 and 12 will remain the same and will continue to be set work via Show My Homework linked to their exam courses, with check point activities after 2-3 weeks of work is completed.

Year 7, 8 and 9 will have a mixture of core subject lessons and mini projects.

These changes are aimed to support all students managing the timings of their work. Work will be set via Show My Homework but there will be more flexibility as to when students complete tasks. We are also aiming to reduce the amount of work set for each lesson whilst including extension activities for those who finish early.

A link to more detailed guidance can be found here <https://www.minster.notts.sch.uk/news/?pid=3&nid=1&storyid=137>

Learning Idea of the Week

The Science Museum has a wide range activities and home experiments that are both educational and fun for all ages.

The link can be found here [Science Museum learning resources](#).

News

MINSTER HUB

School closed on 20th March for most of our students, however through the Minster Hub we have continued to offer care for the children of key workers who are unable to stay at home whilst their parents fulfil their important roles.

We have recently been joined at the hub by children and staff from the family of primary schools, which has enabled all the local schools to continue to offer this invaluable service and to pool resources and provide support for approximately 50 children.

In ensuring that we can offer the best possible care and service, we have a range of staff members on site who have become known as our Hub stars all doing a brilliant job within their roles. These include members of our administration team, our pastoral staff, the premises, cleaning and catering staff all ensuring the buildings are safe and everybody onsite is well looked after and fed. We are pleased to be able to support key workers in their work and will continue this service whilst there is a need.

INTRODUCING SOME OF OUR HUB STARS



Mrs Redmond is part of our pastoral support team who has been available to help support students on and off site



Mr Plummer is one of our premises staff who has been on site every day.



Mrs O' Malley is part of a team of staff who are available to answer your queries and make sure reception and the office run smoothly.



Aspens our caterers are supporting free school meals provision and keeping everyone fed with healthy meals and snacks every day.



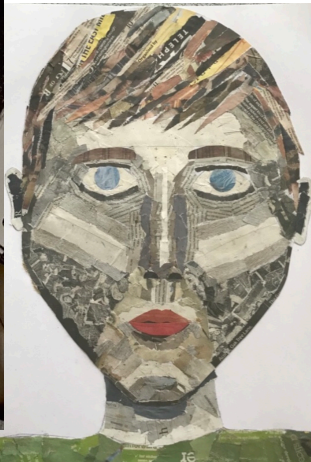
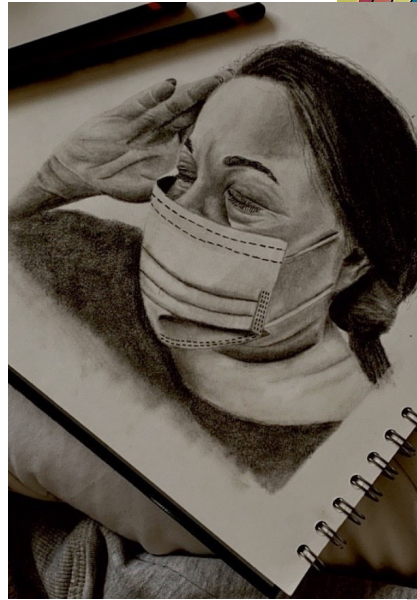
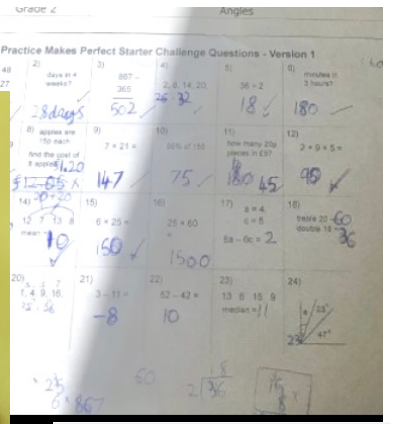
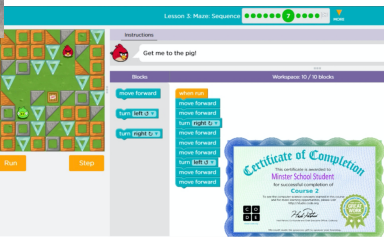
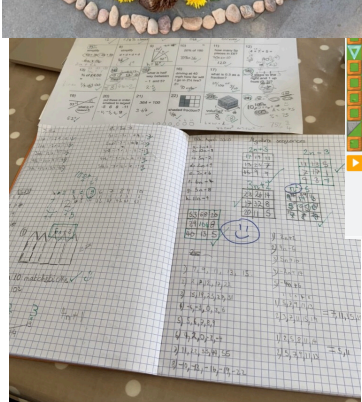
PPE DONATION

This week we donated goggles, masks, aprons and gloves from our science department to the Nottingham University Hospital, City Hospital site to help to protect our health workers.

Learning Gallery

WE WOULD LOVE YOU TO SHARE.....

Any hopeful stories and examples of great activity at home: Learning; Well-being and Community spirit. Please only share if you are happy for us to celebrate with the wider school community through this newsletter and Twitter (only first names will be used) – send to HomeActivities@minster.notts.sch.uk



Y8 Narrative Writing: Dark-Vale Manor

Emily

Dark-Vale Manor is known for being the most haunted place in our town but it isn't the only spooky place we have. I never thought I would come here but it was a dare so I went in. With my friend Lucy of course. From up close the manor looks different it's not as black as thought it was and the garden doesn't look like a jumble of weeds like it's been taken care of. Obviously it's not though. Nobody goes to Dark-Vale Manor. It smells like somebody had died and you could hear the clattering of the straggle tree bushes against the misty window. The middle turret bent backwards like an optical illusion and the only clear window made you look strange like a fun house mirror. The charcoal bricks cried for urgent need before they would collapse. And the gravestones rotted away just like there owners underneath. We looked at each other not knowing if only one of us would make it out.

We walked through the cracked gates and got to the door with a lion head knocker. Lucy pushed open the door. It ground as we stepped inside. The basement of the Manor was on the right it was dark but we had our torches on our phones. The key was still in the door it had a ghostly looking woman on it dressed up in a flowing, black dress with a gold fiery crown on her head. I went first and headed downstairs. It looked as though it hadn't been used for years and an old lady had green key pouring over it. Suddenly, a crash came down and an antique vase was smashed all over the floor. We stood there silent staring but that wasn't the thing we were most spooked about blood splattered out of it everywhere. We decided to look in the kitchen. There were many pictures of little children facing away from the camera. But then our torches went off it was pitch black and then they turned on again and the pictures of the little children were all staring at us. We screamed and ran upstairs.

Deciding to split up we could know what was going on here. I walked into the bathroom. There was a gaping hole in the wall with a mouse inside it and the lace shower curtain was swaying. I opened one of the rusty cupboards and there was medicine. Surely if the was medicine somebody was living there. Next to it was the sink the cabinet blue paint was peeling off it but then I heard a door open next door. It wasn't Lucy. There was an eerie atmosphere in the room. I ran to the bedroom. There was a broken template glowing dull in the corner it sounded as though it was whispering. Something like a chant.

Meanwhile I ran into the living room but she wasn't there, I could hear her shouting for me but I couldn't see her. Then I saw a huge mirror in front of me it was me but my reflection was smirking at me. Then I saw Lucy in the mirror. I didn't know what to do I couldn't get her out but she disappeared. I followed her voice through the walls until I got to the fire place and her voice went. Urgently, I ran out for help stopping at a graveyard. LUCY COVEN: Died: 3rd April 2020.

